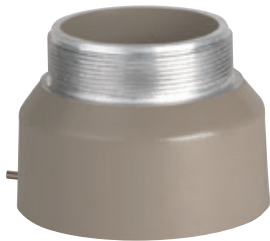




## FIXTURE ADAPTERS



EAC/EACH



EZBA12

Class I, Div. 1 & 2, Group D  
 Class I, Zones 1 & 2, Groups IIA  
 Class II, Div. 1 & 2, Groups E,F,G  
 Class III



### FEATURES-SPECIFICATIONS

## HOSTILE/LITE®

#### Applications

EAC Series adapters are designed to ease upgrading of existing Crouse-Hinds® "EV" series or existing Killark "H" series to Killark HOSTILELITE® EM or EZ series. Units are primarily designed to aid replacement of old ceiling or wall mount units where removal of the existing mounting box and conduit would be difficult or time consuming. Adapter & Killark fixtures rated NEMA 4.

Adapters allow the upgrade of older incandescent fixtures to newer Fluorescent or HID lamp sources, or to Emergency Lighting including ESX strobes or EEQ emergency series.

Note: Adapters are used with Fixture Housing, Globe, Globe Support assemblies, e.g. EBF261 & EMG1; EMS151 & EMG2; or EZH100 & EZG1. Complete fixture with mounting box is not required. Adapters are painted to match Killark beige fixture finish.

#### Features

- Setscrews permit secure adapter attachment into old mounting box and to new fixture
- Converted fixtures may be easily removed for service using the Killark EZ mounting system. Wire terminals are included in the adapter (EZTB Terminal Block)

#### Temperature codes:

See EM/EQ series pages L150 - L151

EZ series pages L160 - L161

EAC / EZBA FIXTURE ADAPTERS		
CATALOG NUMBER	DESCRIPTION	EXAMPLE OF MODEL UTILIZED OR REPLACED
EAC	Killark H series Ceiling or Wall	HXG-2-125 Fixture
EACH12	Crouse old style Ceiling Mount with lamp socket in adapter ring between fixture body and a GUF 12 pitch box	GUF box w/Set Screw
EZBA12	Crouse old style Wall Mount, old style Arm with integral lamp socket (socket in fixture in newer models) attached to GUF 12 pitch mounting box. EZBA12 includes arm	GUF box w/Set Screw
EACH16	Crouse newer style ceiling or wall fixtures w/lamp socket in fixture body; mounted to EV series 16 pitch threaded box; adapter fits in ceiling box or existing arm attached to wall fixture	EVA26/EV22 Box; EVBX240

